

DANESWOOD CARE HOME STATEMENT OF PURPOSE

This Statement of Purpose is drawn up to reflect the guidance of the Dept. Of Health (2003) Care Homes for Adults (18-65): National Minimum Standards, paragraph 4 and schedule 1.

Daneswood is registered as a care home providing personal care (code PC) with the Care Quality Commission for service users of either gender whose primary care needs on admission to the home are within category Learning Disability (code LD). The maximum number of service users accommodated at Daneswood is 17.

The registered provider for this service is:

DANESWOOD
Appleford Ltd
Elston Lane
Shrewton
Salisbury
Wilts SP3 4HL

The responsible person for this service is:

Dr P Gardner B.A.(Hons), Dip Psych., MA., Ed.D., A.F.B.Ps.S., C.Sci., C.Psychol., M.I. Mgt., F.Inst.D.
Harpers Batch
Winford
Bristol BS40 8AF

Peter is a highly qualified psychologist and psychotherapist. He is a chartered educational psychologist, a chartered forensic psychologist, a chartered counselling psychologist, a neuropsychologist and a UKCP registered psychotherapist. Formerly a university lecturer, LEA educational psychologist and NHS clinical psychologist, he has a wide and in-depth experience of children and adults with a range of difficulties including severe and profound and multiple difficulties, autistic spectrum disorder etc.

In 1988 he co-founded Appleford School, an independent specialist school for children with dyslexia and associated learning difficulties.

He works with solicitors and barristers as an expert witness and regularly appears in Crown Courts and in the High Court.

The registered manager for this service is:

Jerry Brown DipSW, NVQ Level 4 Management, D32/D33 NVQ Assessor

Jerry has 25 years experience of working both in care homes and as a social worker dealing with a range of client groups including young adults with severe and profound and multiple learning difficulties, autism, people with communication difficulties and people with mobility difficulties.

Aims:

Daneswood aims to provide for young adults with severe or profound and multiple learning difficulties aged 18+ a caring community where individual rights are respected, individual living skills are developed and individuals’ quality of life is enhanced.

Daneswood seeks to foster and encourage principles of dignity, responsibility and self-worth. It will nurture the individual in all aspects: physical, emotional, social and spiritual. Its core beliefs will encompass a range of approaches including aspects of the anthroposophical ethos of Dr Rudolf Steiner.

Staff:

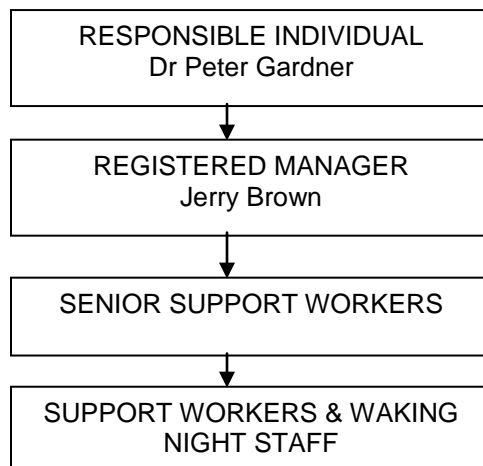
Staffing will be determined by the needs of the service users and will be flexible in order to respond to specific needs. A senior member of staff leads each day shift. Waking night staff will be provided sufficient to meet the needs of individual service users.

Daneswood places a premium on staff training and development. Staff are encouraged to obtain relevant qualifications in order to ensure the delivery of a high quality service. Daneswood is committed to the protection of their service users who are all vulnerable adults. All staff have an enhanced CRB disclosure and full pre employment checks.

The training opportunities on offer to staff include:

- | | |
|---|--|
| Induction Course | Autism |
| NVQ Levels 2, 3 and 4 in Health & Social Care | Epilepsy |
| Care Practice | TEACCH |
| Administration of medicines | PECS |
| Basic First Aid | Makaton and other communication approaches |
| Food Hygiene and Handling | Physical Intervention |
| Manual Handling | Behaviour Management |
| Health and Safety in the Workplace | Person Centred Care |
| Fire prevention and Evacuation | |

Organisational Structure:



Service users' age range and sex:

The age range of service users is upwards of eighteen years of age with most service users being in the age range 18-25 on entry. Daneswood accommodates both young men and young women.

All service users have severe or profound and multiple learning disabilities. Most have no expressive language, some have conditions such as autism and epilepsy and some are incontinent. Some of our service users have mobility problems and need mobility aids such as wheelchairs, specialist seating and bathing arrangements.

Nursing & Health Care:

There is access to the Community Learning Disability Team and provision for nursing support. District Nursing Services connect with those service users who require such input.

Daneswood benefits from consultations and in-service training provided by Dr Peter Gruenewald, an anthroposophical doctor and General Practitioner within the National Health Service with special interest in people with learning disabilities. Where appropriate, he will prescribe homeopathic and/or herbal treatment to complement mainstream treatments and advise on other appropriate therapeutic approaches.

The health of each service user is extremely important. Daneswood strives to ensure that service users have access to relevant health professionals who provide specialist health care. Service users are assisted by the senior staff on duty in taking their prescribed medication.

Service users receive personal care in an appropriate, private and dignified manner. Intimate personal care support requirements are reflected in the individual's care plan.

Admission Criteria:

Referrals are accepted from statutory funding agencies. Referrals should be made to the Registered Manager. Daneswood staff carry out an initial assessment, based on a review of reports and on a visit to the service user's current place of residence. If the assessment indicates that the applicant's needs can be met at Daneswood, the potential service users, their families, and social workers / health workers will be invited to visit Daneswood.

Once the placement has been agreed and funding confirmed, a detailed transition process will then be put into place. All admissions will be carefully planned to reduce levels of anxiety. Emergency placements are not envisaged. The service user will enter Daneswood for an initial period of three months. During this time the service user will get to know the staff, the accommodation and culture of the home. The registered manager, in close discussion with relevant staff, will carry out a continuous assessment of the new service user's gifts, skills and needs for support.

The first review to confirm the Care Plan will be held at the end of the three months and will include the registered manager, the key worker, the service user, relatives, and any other relevant persons. Confirmation of placement will normally follow a satisfactory review.

Social and Leisure Activities:

Daneswood offers service users a range of developmental, educational and vocational programmes to develop and maintain skills and competencies within a range of activities including horticulture, arts and crafts, communication and social skills.

Service users are encouraged to engage in a healthy active lifestyle. The service is fortunate to be situated in a semi-rural setting in one of the most beautiful areas of the country with an abundance of walks, and areas where the young people can pursue their leisure activities. In addition there are numerous public amenities within comfortable driving distance.

To develop and maintain skills, service users are encouraged to make choices and participate in normal communal activities, for example; assisting in preparing some meals, attending to aspects of the laundry process and going on shopping trips.

Holidays are carefully arranged to places suitable to the needs and risk assessments of each individual.

Consultation with Service Users:

The service users' interests are at the forefront of this service and consultation with the service user or their advocate is paramount in any decision-making delegated to those in authority within the service. Daneswood welcomes the involvement of advocates.

Each service user has a Care Plan and activity programme and is supported by their key worker group.

The Care Plan will be reviewed annually in a meeting where all relevant parties including parents and the individual's social worker / health worker are invited. Further meetings can be convened as required.

A costing of any changes to the Care Plan will be made and an agreement reached, if necessary, with the relevant funding authority on the implementation of the plan.

Each service user or representative will be supported in making choices which affect their lifestyle using a key worker system and the introduction of an independent advocate where appropriate.

Each service user will be consulted and informed of any review meeting in advance and can choose to attend the meeting.

Fire Precautions and Safety Issues:

Fire doors, fire alarms, fire extinguishers, and a first aid box are situated in strategic places throughout the home as well as the latter two items being situated in the homes vehicles. Health and safety guidance is available from the office. All staff are trained in fire safety and evacuation procedures.

Religion and Culture:

Daneswood respects individuals' rights to follow their own religion and culture. Full support will be afforded to facilitate service users' attendance at religious services of their choice and to celebrate festivals appropriate to their religion and culture.

Family and Friends:

Contact with family members and friends is encouraged. These arrangements are made on an individual basis and levels of contact are according to each individual's Care Plan. Quiet areas are available for service users to meet their family, friends and professional staff. Telephones are available for the use of the service users.

Complaints Procedure:

Complaints by service users or their representatives can be made as described in the Complaints Procedure, which is issued to service users and their representatives on admission and periodically thereafter. A complaints book is held by the registered manager.

Review Policy:

Each resident has a Care Plan that is internally reviewed every three months and then once a year by all relevant, concerned parties. A further review can be convened as required.

Number and Size of Rooms:

Daneswood has 17 registered bedrooms, all with en-suite facilities. All of the bedrooms have a floor area greater than the 12 square metre stipulated in the National Minimum Standards; rooms 1, 2, 3, 4, 13, 14 and 16 are in excess of the 15 square metres required for wheelchair users.

Therapeutic Approaches:

Daneswood will offer to its young people a wholefood organic diet and will cater for specific prescribed diets, as necessary.

Any therapeutic approaches will be approved by the consultant GP and the Senior Management Team in consultation with the service user and their representative or advocate. Supervision will be in the hands of the manager and any specialist therapist.

Daneswood currently has a range of specialist therapists/advisors including speech and language therapist, occupational therapist, physiotherapist and music therapist.

Rights of the Service User:

Individual risk assessments are completed for each service user before participating in activities which may expose them to risk or danger. The risk assessment will also, if applicable, highlight the appropriate staff ratio in differing situations.

Staff are aware that service users have the capacity for positive development and such development should be nurtured. The service users are cared for with sensitivity, dignity and empathy and given as much freedom as possible. The identification of individual requirements and preference should be the overriding factor in deciding on additional services and further support for the individual.

The service user's right to confidentiality will be strictly maintained and all communication of personal information will be handled discreetly.

Quality Assurance:

Daneswood aims for excellence. The upgrading of knowledge and practice in identifying, understanding and meeting the needs of the service users and their families is central to the philosophy of Daneswood. In addition to statutory inspections, regular quality assurance checks and responsible person visits we will seek to ensure a process of continuing improvement.

Date of document: March 2009

Date of next review of document: March 2010